



Wave MLO5

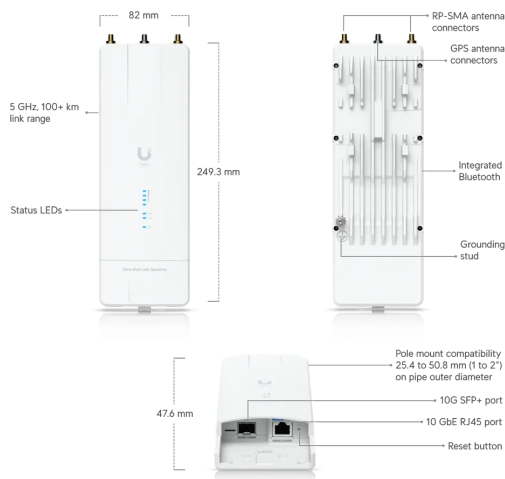
Wave-MLO5

[Datasheet](#)

[Marketing Images](#)

[Accessories](#)

[Installation Guide](#)



^ Mechanical

Dimensions	249.3 x 82 x 47.6 mm (9.8 x 3.2 x 1.9")
Weight	575 g (1.3 lb)
Enclosure Material	Aluminum alloy, UV-resistant polycarbonate
Mount Material	Strap: stainless steel Universal bracket: UV-resistant polycarbonate ⓘ
Mounting	Pole Mount
Pole Mount Diameter	1—2" (25.4—50.8 mm)
Weatherproofing	IPX6

^ Hardware

Processor	Quad-core IPQ5322 at 1.5 GHz
Memory	DDR4 1 GB
Networking Interface	(1) 10 GbE RJ45 port (1) 10G SFP+ port
Max. Power Consumption	20W
Power Method	Passive PoE 4-pairs (1, 2+; 3, 6-) (4, 5+; 7, 8-) Passive PoE 2-pairs (4, 5+; 7, 8-), for 44-54V DC only
Supported Voltage Range	44-54V DC 22-27V DC

54V DC 25W 10 GbE PoE

Power Supply	54 V DC, 0.56A, 10 GbE PoE adapter (Included)
MIMO	
5 GHz	(2) 2 x 2
Max. TX Power	
5 GHz	24 dBm ⓘ
GPS	✓
RF Connections	(2) RP-SMA (Waterproof) (1) GPS (Waterproof)
Buttons	(1) Factory reset
LEDs	
Power	(1) Blue
Ethernet	(1) Blue
GPS	(1) Blue
Signal Strength	(4) Blue
Ambient Operating Temperature	-40 to 60° C (-40 to 140° F)
Ambient Operating Humidity	5 to 95% noncondensing
NDAA Compliant	✓
Certifications	FCC, IC, CE
^ Software	
Operating Modes	PtP
Services	
UISP	✓
Ping Watchdog	✓
NTP Client	✓
Utilities	
Antenna Alignment	✓
Ping	✓
Site Survey	✓
Speed Test	✓
Traceroute	✓
Discovery Utility	✓
Network	Bridge Mode
^ System	
Total Throughput	5+ Gbps

Max. Range 100 km (62.1 mi) ⓘ

Encryption WPA3-PSK (AES)

^ **Radio Frequency**

Operating Frequency

Worldwide 5180 - 5320 MHz
5500 - 5700 MHz
5745 - 5825 MHz ⓘ

Channel Bandwidth Radio 1: 20, 40, 80, 160 MHz
Radio 2: 20, 40, 80, 160, 240 MHz

Modulation BPSK (½), QPSK (½), QPSK (¾), 16QAM (½), 16QAM (¾), 64QAM (½), 64QAM (¾), 64QAM (5/6), 256QAM (¾), 256QAM (5/6), 1024QAM (¾), 1024QAM (5/6), 4096QAM (¾), 4096QAM (5/6)

[Compliance Information](#)

Company

Blog
Case Studies
Careers
Trust Center
Contact Us
Investors
Compliance

Training

Courses
Calendar
Trainers
Become a Trainer

Buy Now

Ubiquiti Store
Find a Distributor
Become a Distributor

Tools

WiFiman
UISP
UniFi Design Center
UISP Design Center
Downloads

Stay in Touch

